



# **Baoding Songli Communication Engineering Co., Ltd.**

# CATALOG



**01** ABOUT COMPANY

**02** CERTIFICATION

**03** RECTIFIER MODULE

**04** MONITORING MOUDULE

**05** EMBEDDED POWER SYSTEM

**06** OUTDOOR CABINET

**07** RRU

**08** BBU



# ABOUT COMPANY

01

# 01

## ABOUT COMPANY



### Basic introduction

Baoding Songli Communication Engineering Co., Ltd. is a professional global provider of telecom communication equipment of service. From 2019 we start to do international business, 30 employees had serviced over 200 customers for 30 countries.



### Main business scope

We sell famous telecom power brands (Emerson, Vertiv, Huawei, ZTE, Eltek, Eaton, Delta) including telecomm power supply, power module, telecom outdoor and indoor cabinet, network cabinets. UPS, Battery, Data center, Room Cooling, Precision air conditioner and so on.



### Development direction

We will provide high quality products, reasonable price timely delivery and quality after-sales services. Our business purpose “quality first, honesty development and win-win cooperation.” We welcome new and old customers from all worlds to contact us for future business relationships and mutual success!



# CERTIFICATION

02

证书编号: 0301946121695ROM



## 产品认证证书

Certificate for Product Certification

申请单位名称及地址

维谛技术有限公司

广东省深圳市南山区学苑大道 1001 号南山智园 B2 栋 1-4 楼、6-10 楼 518055

生产单位名称及地址

绵阳高新区恒奥电子科技有限公司

四川省绵阳市高新区科发大道中段 299 号

获证产品

NetSure 531 系列通信用高频开关电源系统 (48V/30A 270A 及以下

嵌入式 室内型)

(产品具体型号见附件)

认证依据产品标准

YD/T1058-2015\*

上述产品满足 供电系统/设备认证实施规则的要求, 特发此证

认证模式: 型式试验+初始工厂检查+获证后监督

特此证明

本次颁证日期: 2019 年 09 月 17 日 换证日期: 2020 年 10 月 10 日

证书有效期至: 2022 年 09 月 16 日

首次颁证日期: 2019 年 09 月 17 日

(本证书有效性可从 [www.cnca.gov.cn](http://www.cnca.gov.cn) 或 [www.tlc.com.cn](http://www.tlc.com.cn) 网站查询)

\*注: 有关产品符合标准的细节见证书附件

泰尔认证中心有限公司  
TL Certification Centre Co., Ltd.

签发人:  
Signed by

李斌



扫码关注  
“泰尔认证”微信  
公众号,  
获取更多  
信息。



中国认可  
产品  
PRODUCT  
CNAS C030-P

证书编号: 0301946121696ROM



## 产品认证证书

Certificate for Product Certification

申请单位名称及地址

维谛技术有限公司

广东省深圳市南山区学苑大道 1001 号南山智园 B2 栋 1-4 楼、6-10

楼 518055

生产单位名称及地址

绵阳高新区恒奥电子科技有限公司

四川省绵阳市高新区路南工业区

获证产品

NetSure 731 系列通信用高频开关电源系统 (48V/50A 600A 及以下 嵌

入式 室内型)

(产品具体型号见附件)

认证依据产品标准

YD/T1058-2015\*

上述产品满足 供电系统/设备认证实施规则的要求, 认证模式型式试验+初次

工厂检查+获证后监督

特此证明

本次颁证日期: 2019 年 09 月 17 日

证书有效期至: 2022 年 09 月 16 日

首次颁证日期: 2019 年 09 月 17 日

(本证书有效性可从 [www.cnca.gov.cn](http://www.cnca.gov.cn) 或 [www.tlc.com.cn](http://www.tlc.com.cn) 网站查询)

\*注: 有关产品符合标准的细节见证书附件

泰尔认证中心 (盖章)  
TL Certification Centre

中心主任 (签字)  
Director

李斌



中国认可  
产品  
PRODUCT  
CNAS C030-P



# Rectifier module

03



BRAND: VERTIV/EMERSON



	<b>R48-2900U</b> AC INPUT: 200-250V~16A 50/60Hz DC OUTPUT: -48V ~2900W
	<b>R48-4000e</b> AC INPUT: 100-250V~23.5A 50/60Hz DC OUTPUT: -48V~4000W
	<b>R48-1000A</b> AC INPUT: 200-250V~7A 50/60Hz DC OUTPUT: -48V~20.9A 1000W MAX
	<b>R48-1800A</b> AC INPUT: 200-250V~12A 50/60Hz DC OUTPUT: -48V~1740W MAX
	<b>R48-2000A3</b> AC INPUT: 200-250V~13A 50/60Hz DC OUTPUT: -48V~1740W
	<b>R48-2000e3</b> AC INPUT: 200-250V~13A 50/60Hz DC OUTPUT: -48V~1740W
	<b>R48-2000E</b> AC INPUT: 100-250V~13A 50/60Hz DC OUTPUT: -48V~2000W
	<b>R48-3000e3</b> AC INPUT: 200-250V~22A 50/60Hz DC OUTPUT: -48V~3000W

	<b>R48-4000E</b> AC INPUT: 100-250V~23.5A 50/60Hz DC OUTPUT: -48V~4000W
	<b>HD4825-3</b> AC INPUT: 200V-240V ~ 9A 50/60Hz DC OUTPUT: -48V 25A
	<b>HD4830-3</b> AC INPUT: 200V-140V ~ 11A 50/60Hz DC OUTPUT: -48V 30A
	<b>HD4850-2</b> AC INPUT: 220V 15A 50/60Hz DC OUTPUT: -48V 50A
	<b>R24-2200</b> AC INPUT: 200-250V~14A 50/60Hz DC OUTPUT: +24V~2175W
	<b>R48-500A</b> AC INPUT: 200-250V~7A 50/60Hz DC OUTPUT: -48V~10.5A 500W MAX
	<b>R48-3200</b> AC INPUT: 200-250Vac 18A 50/60Hz DC OUTPUT: -48V~3200W
	<b>R48-3200E</b> AC INPUT: 200-250V~17A 50/60Hz DC OUTPUT: -48V~3000W
	<b>R48-3500E</b> AC INPUT: 200-250V~18.5A 50/60Hz DC OUTPUT: -48V~3500W



# 03

## Rectifier module

	<b>R48-5800A</b> AC INPUT:380-415V~10A 50/60Hz DC OUTPUT:-48V--5800W
	<b>R48-5800E</b> AC INPUT:380-480V~ 50/60Hz 10A DC OUTPUT:-48V--5800W

BRAND: HUAWEI

	<b>R4850G1</b> INPUT :~ 200-240 V;50/60Hz;18.5A OUTPUT:53.5V;56.1A INPUT :~ 100-120 V;50/60Hz;16A OUTPUT:53.5V;22.4A
	<b>R4850G2</b> INPUT :~ 200-240 V;50/60Hz;17A OUTPUT:53.5V;56.1A INPUT :~ 100-120 V;50/60Hz;17A OUTPUT:53.5V;25.2A
	<b>R4850G6</b> INPUT :~ 200-240 V;50/60Hz;17A OUTPUT:53.5V;56.1A INPUT :~ 100-120 V;50/60Hz;17A OUTPUT:53.5V;25.2A
	<b>R4850N1</b> INPUT :~ 200-240 V;50/60Hz;19.5A OUTPUT:53.5V;50A INPUT :~ 100-120 V;50/60Hz;17A OUTPUT:53.5V;22.4A
	<b>R4850N2</b> INPUT :~ 200-240 V;50/60Hz;17A OUTPUT:53.5V;56.1A INPUT :~ 100-120 V;50/60Hz;17A OUTPUT:53.5V;25.2A
	<b>R4850N6</b> INPUT :~ 200-240 V;50/60Hz;17A OUTPUT:53.5V;56.1A INPUT :~ 100-120 V;50/60Hz;17A OUTPUT:53.5V;25.2A

	<b>R4815G1</b> INPUT :~ 200-240 V;50/60Hz;5.3A OUTPUT:53.5V;18.7A INPUT :~ 200-380 V;5.3A OUTPUT:53.5V;18.7A
	<b>R4815N1</b> INPUT :~ 200-240 V;50/60Hz;4.9A OUTPUT:53.5V;17.2A INPUT :~ 100-120 V;50/60Hz;5.3A OUTPUT:53.5V;8.6A
	<b>R4830G1</b> INPUT :~ 200-240 V;50/60Hz;10.6A OUTPUT:53.5V;37.4A INPUT :~ 200-380 V;10.6A OUTPUT:53.5V;37.4A
	<b>R4830N2</b> INPUT :~ 200-240 V;50/60Hz;10A OUTPUT:53.5V;30A INPUT :~ 100-120 V;50/60Hz;10A OUTPUT:53.5V;15A
	<b>R4875G1</b> INPUT :~ 200-240 V;50/60Hz;21A OUTPUT:53.5V;75A INPUT :~ 100-120 V;50/60Hz;19A OUTPUT:53.5V;32.5A
	<b>R48100G1</b> INPUT :~ 380-480 V;50/60Hz;10A OUTPUT:53.5V;112.2A
	<b>R48100N1</b> INPUT :~ 380-480 V;50/60Hz;10A OUTPUT:53.5V;6000W
	<b>R50030G1</b> INPUT :~ 342-418 V;50/60Hz;28A OUTPUT:--500V;30A
	<b>EPW50-48A</b> AC INPUT :~200-240V;18.5A OUTPUT:53.5V;2900W AC INPUT :~100-130V;16A OUTPUT:53.5V;18.7A

# 03

## Rectifier module

BRAND: DPC


	<b>DZY-48/15HIV</b> INPUT:176-264VAC OUTPUT:48VDC 15A
	<b>DZY-48/30HV</b> INPUT:154V-286VAC OUTPUT:48VDC 30A
	<b>DZY-48/30HIII</b> INPUT:176-253VAC 30A OUTPUT:48VDC
	<b>DZY-48/30HI</b> INPUT:220V-240V OUTPUT:48VDC 30A 1740W
	<b>DZY-48/50B</b> INPUT:Three phase 380V/AC 8A OUTPUT:48V/50A
	<b>DZY-48/50HI(TTI)</b> INPUT:90-300V 50Hz±10% OUTPUT:48V/50A
	<b>DZY-48/50H</b> INPUT:220V OUTPUT:50A
	<b>DZY-24/100B</b>

BRAND: ZTE

	<b>ZXD3000(V5.1)</b> INPUT:100-240V~;50/60Hz AC Current:18A MAX DC OUTPUT:53.5V 50A 3000W MAX
	<b>ZXD030 S480</b> INPUT:100V-240V ~ 14A 50/60Hz OUTPUT:48V-- 30A
	<b>ZXD800(V4.0)</b> INPUT:200-240V~ ; 7A MAX ; 50/60Hz DC OUTPUT:53.5V 802W
	<b>ZXD1500(V4.0)</b> INPUT:200-240V~ 8A 50/60Hz OUTPUT:48V-30A
	<b>ZXD1500(V3.0)</b> INPUT:220-240V~8A 50Hz OUTPUT:48V-30A
	<b>ZXD1500V5.0(R03)</b> INPUT:100-240V ; 50/60Hz; AC Current:14A MAX DC OUTPUT:53.5V 1728W
	<b>ZXD2400(V4.1)</b> INPUT:200-240V~16A ;50/60Hz OUTPUT:48V-50A
	<b>ZXD2400(V4.2)</b> INPUT:200-240V~16A ;50/60Hz OUTPUT:48V-50A

	<b>ZXD2400(V4.3)</b> INPUT:100-240V~;50/60Hz; AC Current:18A MAX DC OUTPUT:53.5V 3000W
	<b>ZXD3000(V5.0)</b> INPUT:100-240V~; 50/60Hz; AC Current:18A MAX DC OUTPUT:53.5V 3000W
	<b>ZXD3000(V5.5)</b> INPUT:100-240V~;50/60Hz AC Current:18A MAX DC OUTPUT:53.5V 50A 3000W MAX
	<b>ZXD3000(V5.6)</b> INPUT:100V-240V ~ 14A 50/60Hz OUTPUT:48V-- 30A
	<b>ZXD5000(V6.0)</b> INPUT:380V~ ; 50/60Hz;3W+ AC Current:13A MAX DC OUTPUT:53.5V 100A



## BRAND: ELTEK

	<b>FLATPACK2 48/2000HE</b> INPUT:100-250Vac / 100-250Vdc AC CCurrent:12.5A MAX; DC OUTPUT:53.5V/37.4A
	<b>FLATPACK2 48/3000HE</b> INPUT:100-277Vac ;AC CCurrent:19A MAX/176Vac DC OUTPUT:53.5V/56.1A
	<b>FLATPACK2 2000W 48V</b> INPUT:100-250Vac ;AC CCurrent:12.5A MAX/185Vac DC OUTPUT:53.5V/37.4A

## BRAND: DELTA

	<b>ESR-48/40A C</b> INPUT:220V-240V~/ 12A,50/60Hz OUTPUT:54.0V--33.34A
	<b>ESR-48/50D E</b> INPUT:200V-250V~/ 20A,50/60Hz OUTPUT:54V--55.5A
	<b>ESR-48/56A C</b> INPUT:220V-240V~/ 16A,50/60Hz OUTPUT:57.6V--50A
	<b>ESR-48/56B C</b> INPUT:200V-240V~/ 17A,50/60Hz OUTPUT:54.0V--53.7A
	<b>ESR-48/56C N</b> INPUT:200V-240V~/ 17A,50/60Hz OUTPUT:54V--53.7A




## BRAND: EATON

	<b>APR48-3G</b> AC INPUT:100-240V; 50/60Hz DC OUTPUT:48V--1800W
	<b>APR48-ES</b> AC INPUT:100-240V; 50/60Hz;12A(MAX) DC OUTPUT:48V--1800W



# 03 Rectifier module

BRAND: ZHONHEN

	<p>APR48-3G</p> <p>INPUT:200-240V; 50/60Hz; 12A(MAX) OUTPUT:43-58V--33A</p>
	<p>NPR48-3G</p> <p>AC INPUT:220Vac; 50Hz; 19A(MAX) DC OUTPUT:43-58V--53A(MAX); 2900W</p>
	<p>NPR48-ES</p> <p>AC INPUT:100-220Vac; 50-60Hz; 18A(MAX) DC OUTPUT:48V; 3000W</p>

**Brand New and Original  
Rectifier Module,  
welcome to contact us**

BRAND: PRTEM

	<p>SMR3004D</p> <p>INPUT:220Vac; OUTPUT:48V-- 50A</p>
---	---



# Monitoring module

04

# 04 Monitoring module

BRAND: EMERSON

	<b>M831D</b> DC INPUT :19-60V-- INPUT CURRENT:0.5A (MAX: 1.5A)
	<b>M500D</b> DC INPUT :19-60V-- INPUT CURRENT: 0.3A
	<b>M500F</b> DC INPUT :19-60V-- INPUT CURRENT: 0.3A
	<b>M821D</b> DC INPUT :19-60V-- INPUT CURRENT: 0.5A (MAX: 1.5A)
	<b>PSM-D21</b> DC INPUT :19-60V-- INPUT CURRENT: 0.3A

BRAND: ZTE

	<b>CSU401S</b>
	<b>CSU501B</b>
	<b>ZXDU58 B121</b>





保定松利通信工程有限公司

Baoding Songli Communication Engineering Co., Ltd.

# Embedded power system

05

## 05

## Embedded power system

BRAND: VERTIV/EMERSON



Configuration model	NetSure 212 C23-S1/S2
System capacity	40A
Monitoring module	M225s (RS232 interface)
Rectifier module	20A(R48-1000A)
AC distribution	S1 input: adopt iec60320 C14 national standard socket S2 input: 3P fence terminal (L + N + PE)
AC lightning protection	Class C (optional)
DC distribution	Battery shunt: 1 × 30A (fuse) Battery power down: 2 × 20A、6 × 10A (fuse)
DC lightning protection	≥ 10kA (optional)
Mechanical parameters	483mm (width) × 290mm deep × 44mm (high) (19 inches 1U high), ≤ 10kg (excluding module)
Installation mode	Embedded



Configuration model	NetSure 531 A31-S1/S2/S3	NetSure 531 A32-S1
System capacity	90A	90A
Monitoring module	S1: m221s (RS232 interface, network interface) S2: m830b (RS232 interface, network port, USB port) S3: m225s (RS232 interface)	M221s (RS232 interface, network port)
Rectifier module	30A(R48-2000A3、R48-2000e3 optional)	30A(R48-2000A3、R48-2000e3 optional)
AC distribution	Input: 1 × 63A / 2p (circuit breaker)	Input: 1 × 40A / 2p (hydraulic air switch)
AC lightning protection	Class C (optional)	Class C (optional)
DC distribution	Battery shunt: 2 × 63A / 1p (circuit breaker) Battery power down: 1 × 50A/1P、3 × 32A/1P、4 × 16A / 1p (circuit breaker)	Battery shunt: 2 × 50A / 1p (hydraulic air switch) Battery power down: 1 × 40A/1P、2 × 30A/1P、3 × 20A / 1p (hydraulic air switch)
DC lightning protection	≥ 10kA (optional)	≥ 10kA (optional)
Mechanical parameters	483mm (width) × 310mm deep × 132mm (high) (19 inches 3U high), ≤ 15kg (excluding module)	483mm (width) × 310mm deep × 88mm (high) (19 inches 2U high), ≤ 12kg (excluding module)
Installation mode	Embedded	Embedded

BRAND: VERTIV/EMERSON



Configuration model	NetSure 531 A41-S2	NetSure 531 A41-S3	NetSure 531 A41-S4
System capacity	120A	120A	120A
Monitoring module	M221s (RS232 interface, network port)	MS30b (RS232 interface, network port, USB port)	M225s (RS232 interface)
Rectifier module	30A (R4S-2000A3, R4S-2000e3 optional)	30A (R4S-2000A3, R4S-2000e3 optional)	30A (R4S-2000A3, R4S-2000e3 optional)
AC distribution	Input: 1 × 63A / 2p (circuit breaker) Output: 1 × 16A / 1p (circuit breaker)	Input: 1 × 63A / 2p (circuit breaker)	Input: 1 × 63A / 2p (circuit breaker) Output: 1 × 16A / 1p (circuit breaker)
AC lightning protection	Class C	Class C (optional)	Class C
DC distribution	Battery shunt: 2 × 63A / 1p (circuit breaker) Power under load: 2 × 63A/1P, 2 × 32A / 1p (circuit breaker) Battery power down: 2 × 16A / 1p (circuit breaker)	Battery shunt: 2 × 63A / 1p (circuit breaker) Power under load: 2 × 63A/1P, 2 × 32A / 1p (circuit breaker) Battery power down: 2 × 32A/1P, 2 × 10A / 1p (circuit breaker)	Battery shunt: 2 × 63A / 1p (circuit breaker) Power under load: 2 × 63A/1P, 2 × 32A/1P2 × 16A / 1p (circuit breaker) Battery power down: 2 × 16A / 1p (circuit breaker)
DC lightning protection	≥ 10kA	≥ 10kA (optional)	≥ 10kA
Mechanical parameters	483mm (width) × 310mm deep × 178mm (high) (19 inches 4U high), ≤ 25kg (excluding module)	483mm (width) × 310mm deep × 178mm (high) (19 inches 4U high), ≤ 25kg (excluding module)	483mm (width) × 310mm deep × 178mm (high) (19 inches 4U high), ≤ 25kg (excluding module)
Installation mode	Embedded	Embedded	Embedded

Configuration model	NetSure 731 A41-S1	NetSure 731 A41-S2	NetSure 731 A41-S8
System capacity	200A	200A	200A
Monitoring module	M225s (RS232 interface)	M221s (RS232 interface, network interface) / m222s (RS232 interface)	MS30b (RS232 interface, network port, USB port)
Rectifier module	50A (R4S-3000A3, R4S-3000e3 optional)	50A (R4S-3000A3, R4S-3000e3 optional)	50A (R4S-3000A3, R4S-3000e3 optional)
AC distribution	Input: 1 × 125A / 2p (circuit breaker) Output: 1 × 16A / 1p (circuit breaker)	Input: 1 × 125A / 2p (circuit breaker) Output: 1 × 16A / 1p (circuit breaker)	Input: 1x125a / 2P
AC lightning protection	Class C	Class C	Class C
DC distribution	Battery shunt: 2 × 125A / 1p (circuit breaker) Power under load: 2 × 63A/1P, 4 × 32A/1P, 2 × 16A / 1p (circuit breaker) Battery power down: 2 × 32A/1P, 2 × 16A / 1p (circuit breaker)	Battery shunt: 2 × 125A / 1p (circuit breaker) Power under load: 2 × 63A/1P, 4 × 32A/1P, 2 × 16A / 1p (circuit breaker) Battery power down: 2 × 32A/1P, 2 × 16A / 1p (circuit breaker)	Battery shunt: 2 × 125A / 1p (circuit breaker) Power under load: 2 × 63A/1P, 4 × 32A/1P, 2 × 16A / 1p (circuit breaker) Battery power down: 2 × 32A/1P, 2 × 16A / 1p (circuit breaker)
DC lightning protection	≥ 10kA	≥ 10kA	≥ 10kA
Mechanical parameters	483mm (width) × 400mm deep × 178mm (high) (19 inches 4U high), ≤ 25kg (excluding module)	483mm (width) × 400mm deep × 178mm (high) (19 inches 4U high), ≤ 25kg (excluding module)	483mm (width) × 400mm deep × 178mm (high) (19 inches 4U high), ≤ 25kg (excluding module)
Installation mode	Embedded	Embedded	Embedded

## 05

## Embedded power system

BRAND: VERTIV/EMERSON



Configuration model	NetSure 731 A91-S1	NetSure 731 A91-S2	NetSure 731 A91-S3
System capacity	540A	540A/450A	450A
Monitoring module	M830b (RS485 interface, USB, network port)	M530b (RS485 interface, USB, network port)	M830b (RS485 interface, USB, network port)
Rectifier module	60A (R48-3500e3)	60A (R48-3500e3) / 50A (R48-3000e3)	50A (R48-3000e3)
AC distribution	Input: 1 × 100A / 4P (circuit breaker)		
AC lightning protection	Class C		
DC distribution	Battery shunt: 4 × 125A / 1p (circuit breaker) Power under load: 3 × 63A/1P, 3 × 32A/1P, 2 × 16A / 1p (circuit breaker) Battery power down: 2 × 63A/1P, 2 × 32A/1P, 2 × 16A / 1p (circuit breaker)		
DC lightning protection	≥20kA		
Mechanical parameters	483mm (width) × 400mm deep × 352mm (high) (19 inches 8U high), ≤ 25kg (excluding rectifier module)		
Installation mode	Embedded		



Configuration model	NetSure 2100 A31-S1	NetSure 2100 A31-S2	NetSure 2100 A31-S3
System capacity	40A	60A	60A
Monitoring module	M225s (RS232 interface)	M225s (RS232 interface)	M831a (RS485 interface, network port)
Rectifier module	20A (R48-1000e3)	20A (R48-1000e3)	20A (R48-1000e3)
AC distribution	Input: 1 and N inputs adopt quick plug terminals, and PE adopts screws		
AC lightning protection	Class C (optional)		
DC distribution	Battery shunt: 1 × 30A (hydraulic air switch) Battery power down: 1 × 20A, 2 × 10A (hydraulic air switch)	Battery shunt: 1 × 50A (hydraulic air switch) Battery power down: 2 × 30A, 1 × 10A, 1 × 3A (hydraulic air switch)	Battery shunt: 1 × 50A (hydraulic air switch) Battery power down: 2 × 30A, 1 × 10A, 1 × 3A (hydraulic air switch)
DC lightning protection	≥ 10kA (optional)		
Mechanical parameters	483mm (width) × 240mm deep × 44mm (high) (19 inches 1U high), ≤ 4kg (excluding rectifier module)		
Installation mode	Embedded		

# 05

# Embedded power system

BRAND: DPC

6U



System Configuration		
	Project	300A
System configuration, subject to the physical object	Overall dimension W*D*H	444*362*255(mm)
	Input format	Single phase three wire system Three phase five wire system
	Rectifier module	≤ 6 sets ≤ 6 sets
	AC input	Circuit breaker 63A/2P Circuit breaker 63A/4P
	AC SPD	Class C lightning arrester (optional)
	DC output	Primary power down circuit breaker 63A/1P*3 32A/1P*1 16A/1P*2 Secondary power down breaker 100A/1p*4 63A/1P*1 32A/1P*1 Power on Circuit breaker 32A/1P*2 16A/1P*1
work environment	Temperature range	Working environment temperature: - 25 ~ + 45C; Storage ambient temperature: - 45 ~ + 70c;
	Humidity range	Working relative humidity: ≤ 90% (40 soil 2C) (no condensation); Storage relative humidity: ≤ 95% (40 ± 2C) (no condensation);
	Atmospheric pressure requirements	Atmospheric pressure (altitude): 70 ~ 106kpa (altitude: 0 ~ 3000m). Note: the system shall be derated for use under the operating environment above 3000m altitude. For each 200m
	AC input voltage	304~475Vac(Phase voltage 176~275Vac)Rated current output,Derating output at 156 ~ 304vac (phase voltage 90 ~ 176vac)
	Input frequency	47.5~65Hz
	Rated DC voltage	- 48VDC
	Voltage stabilizing working range	-42 ~ - 58vdc (rated load)
	Efficiency	≥94% (40%~90% Load rate)



## 05

## Embedded power system

BRAND: DPC

9U



System  
configuration,  
subject to the  
physical  
object

System Configuration					
	Project	120A	300A	600A	
System configuration, subject to the physical object	Overall dimension W*D*H	444*362*399(mm)		444*362*531.5(mm)	
	Input format	Single phase three wire system		Three phase five wire system	
	Rectifier module	≤4 sets	≤6 sets	≤12 sets	
	AC input	Circuit breaker 32A/2P	Circuit breaker 63A/4P		
	AC SPD	Class C lightning arrester			
	Battery Input	100A*2	125A*4		
	DC output circuit breaker	Primary power down:32A/1P*8 16A/1P*2 6A/1P*1 Power off of electric protection (secondary) 25A/1P*3 6A/1P*1	Customer 1 ~ 3:Primary power down:100A/1P*1 16A/1P*1 6A/1P*1 Power off of electric protection (secondary)25A/1P*1 Customer 4:Primary power down:63A/1P*1 Power off of electric protection	Primary power down:125A/1P*6 63A/1P*1 Power off of electric protection (secondary)63A/1P*1 32A/1P*2	Customer 1 ~ 3:Primary power down:125A/1P*2 Power off of electric protection (secondary)63A/1P*1 Customer 4:Primary power down:63A/1P*1 Power off of electric protection (secondary)32A/1P*2
work environment	Temperature range	Working environment temperature: - 25 ~ + 45C; Storage ambient temperature: - 45 ~ + 70c;			
	Humidity range	Working relative humidity: ≤ 90% (40 soil 2C) (no condensation);			
	Atmospheric pressure requirements	Atmospheric pressure (altitude): 70 ~ 106kpa (altitude: 0 ~ 3000m). Note: the system shall be derated for use under the operating environment above 3000m altitude. For each 200m increase in altitude, the working environment temperature will be reduced by 1C.			
	AC input voltage	304~475Vac(Phase voltage 176~275Vac)Rated current output,Derating output at 156 ~ 304vac (phase			
	Input frequency	47.5~65Hz			
	Rated DC voltage	- 48VDC			
	Voltage stabilizing working range	-42 ~ - 58vdc (rated load)			
	Efficiency	≥94% (40%~90%			

# 05

## TABLE OF CONTENTS

(Embedded power system)

BRAND: ZTE

B201



Zxdu68 B201 is a large capacity, high efficiency and small volume embedded DC power supply system, with a height of 5u, high efficiency rectifier module and maximum capacity of 200A.

Features high efficiency rectifier

- It is applicable to the voltage range of 85vac ~ 295vac
- Compatible with zxd3000 and zxd2000 Rectifiers
- Support web remote access and computer remote management
- It supports batch setting parameters and copying historical data using USB flash disk
- Rectifier Qui shortcut key, convenient and fast query and fault location
- Provide dry node, RJ45, RS232, RS485 and USB interfaces to meet Telnet, HTTP FTP and SNMP networking requirements

B301



ZTE ZXDU68B301(5g special) embedded power supply, 48v300a power supply parameters

Operating temperature: - 40 °C ~ + 55 °C;

Storage temperature: - 40 °C ~ + 70 °C;

Relative humidity: 10% ~ 90%;

Waterproof and dustproof: IP55;

Input mode: three-phase five wire system (L1 / L2 / L3 / N / PE);

Rated input voltage: line voltage 380 VAC, phase voltage 220 VAC;

Voltage range: phase voltage 176 VAC ~ 300 VAC;

B900



Equipped with a new generation of rectifier module, it has higher power density, higher efficiency and wider working temperature range. Wide input voltage range: 80vac ~ 300VAC, applicable to a wide range of power grids.

The plug-in box structure is adopted, and the rectifier adopts hot plug mode, which is convenient for installation and maintenance. It integrates AC and DC power distribution, rectifier and monitoring unit, with light weight, small volume and perfect functions. High performance surge suppression device is adopted, which has strong power surge protection performance. Input: 80 ~ 300VAC





# Outdoor cabinet

06

## 06 Outdoor cabinet

Communication tower is an important part of wireless communication system. During 5g construction, 5g AAU equipment will be mounted on some communication towers. During the early construction of some stations, the energy consumption when 5g equipment is added in the later stage is not considered, so the power expansion needs to be considered; In view of the above, it is necessary to provide outdoor integrated cabinet for functional purposes such as power cabinet and equipment cabinet.



## 06 Outdoor cabinet

Many 5g base stations are installed on the roof. 5g base station can save the investment of computer room resources by deploying the scheme of one station and one cabinet (i.e. configuring intelligent outdoor cabinet to realize one station, one cabinet and zero computer room).



The outdoor integrated cabinet solution of 5g communication base station integrates main equipment, system power supply, AC / DC power distribution, battery, lightning protection and grounding equipment, temperature control and dynamic ring monitoring (power distribution monitoring, rectifier module monitoring, air conditioning control, temperature and humidity monitoring, flooding monitoring, access control, smoke detection, vibration monitoring, etc.). The cabinet is divided into a variety of warehouses, which can be used as functional cabinets (power cabinet, battery cabinet, transmission cabinet, etc.) to help operators realize easy selection of station site, energy conservation and emission reduction, rapid deployment, and meet the construction of 5g communication network with more energy saving, land saving and green.

The outdoor integrated cabinet solution of 5g communication base station integrates main equipment, system power supply, AC / DC power distribution, battery, lightning protection and grounding equipment, temperature control and dynamic ring monitoring (power distribution monitoring, rectifier module monitoring, air conditioning control, temperature and humidity monitoring, flooding monitoring, access control, smoke detection, vibration monitoring, etc.). The cabinet is divided into a variety of warehouses, which can be used as functional cabinets (power cabinet, battery cabinet, transmission cabinet, etc.) to help operators realize easy selection of station site, energy conservation and emission reduction, rapid deployment, and meet the construction of 5g communication network with more energy saving, land saving and green.

## 06 Outdoor cabinet

### 【1】 Small and medium capacity site solutions

A single cabinet can form a base station. The backup battery can be configured as required.



## 06 Outdoor cabinet

### 【2】 Medium and large capacity site solutions

The outdoor standardized cabinet can be assembled into two cabinets, and the two cabinets form a base station. For example, the left cabinet is the battery cabinet and the right cabinet is the equipment cabinet. The backup battery can be configured as required.



## 06 Outdoor cabinet

### 【3】 Super macro station or CO station solution

For super macro stations or large base stations with common stations, outdoor standardized cabinets assembled with multiple cabinets can be adopted, which are composed of 3 or more cabinets, with larger internal space, which can meet the needs of equipment sharing stations. The backup battery can be configured as required.







**RRU**

**07**

# 07 RRU

Model: Radio 2219 B1



Model: RRU3971

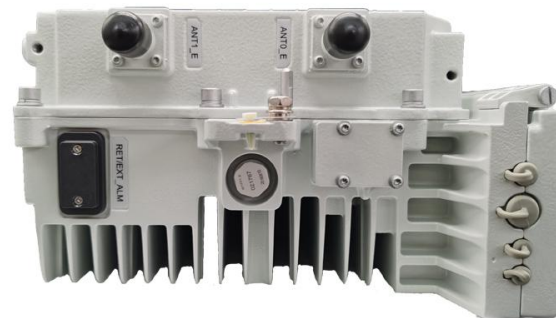


# 07 RRU

Model: RRU3230E



Model: RRU3182



# 07 RRU

Model: RRUB01 2100



Model: RRU 3959



# 07 RRU

Model: RRU ZXSDR S9000

**See Next**





**BBU**

**08**

08

BBU

Model: BBU ZXSDR B8200



Model: BBU ZXSDR B8300





08

BBU

Model: BBU ZXSDR S8500



Model: Bbu3900 Bbu3910





**Welcome to contact us ~  
large quantity discount**

